



GAT MONTHLY MEMBERSHIP PROGRESS REPORT

Results as of: 4/30/2023

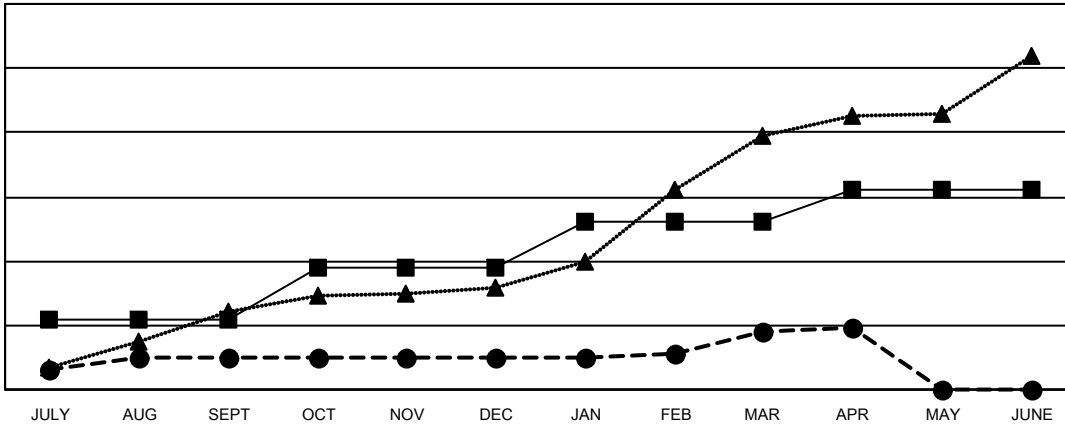
Multiple District 3233

LOCATION: INDIA

Clubs			
RESULTS FOR 2022-2023			
QUARTER	NEW CLUB GOAL	NEW CLUBS	DROPPED CLUBS
JULY/AUG/SEPT	22	10	12
OCT/NOV/DEC	16	0	63
JAN/FEB/MAR	14	8	11
APR/MAY/JUNE	10	1	1

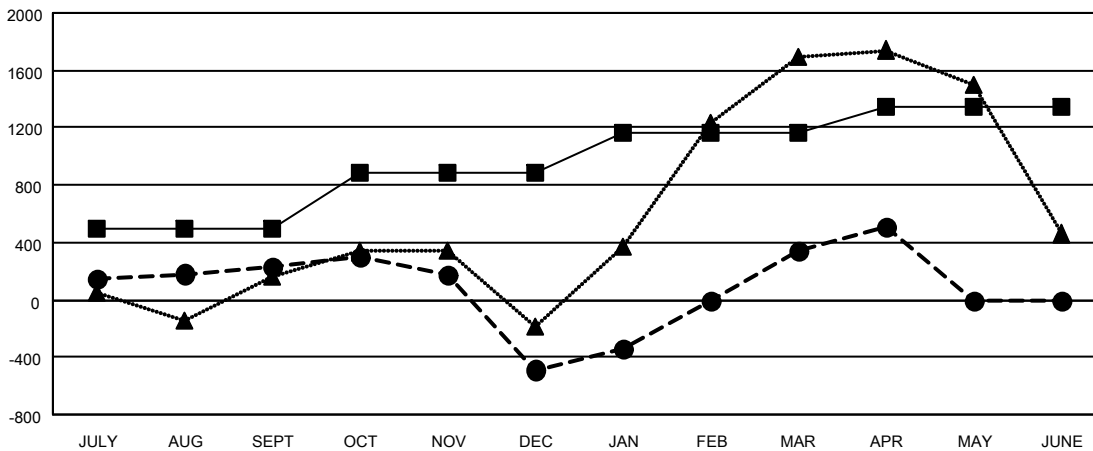
Members			
RESULTS FOR 2022-2023			
QUARTER	MEMBER GROWTH NET GOAL	MEMBER GROWTH ACTUAL	DROPPED MEMBERS ACTUAL (including transfers)
JULY/AUG/SEPT	495	989	638
OCT/NOV/DEC	395	416	1,094
JAN/FEB/MAR	280	1,212	203
APR/MAY/JUNE	180	377	137

GOALS AND ACTUAL NEW CLUBS CUMULATIVE



- - CURRENT YEAR GOALS FOR NEW CLUBS
- - CURRENT YEAR ACTUAL NEW CLUBS
- ▲ - LAST YEAR ACTUAL NEW CLUBS

GOALS AND ACTUAL MEMBERS CUMULATIVE



- - MEMBER GROWTH NET GOAL
- - MEMBER GROWTH ACTUAL
- ▲ - LAST YEAR MEMBERSHIP ACTUAL

DROPPED CLUBS: 87	469 CLUBS OF 870 ADDED 1 OR MORE NEW MEMBERS	GENDER DISTRIBUTION
DROPPED MEMBERS	CLICK HERE FOR CUMULATIVE MEMBERSHIP DATA	MALE 14,458 (66.92%)
DECEASED 39		FEMALE 7,130 (33.00%)
CLUB CANCELLED 682		NON BINARY 1 (0.00%)
OTHER 1,351		PREFER NOT TO ANSWER 15 (0.07%)
TOTAL 2,072		TOTAL FAMILY UNIT MEMBERS 10,561
		FAMILY MEMBERS PAYING HALF DUES 6,262